

Cisco VoIP Portfolio for Residential SOHO and Small Business



Radu Bălănescu
Cisco Account Manager

Premii IDEA

Premiul 1

Wireless-N Vista Media Extender with CD/DVD player + Router
WRT610N

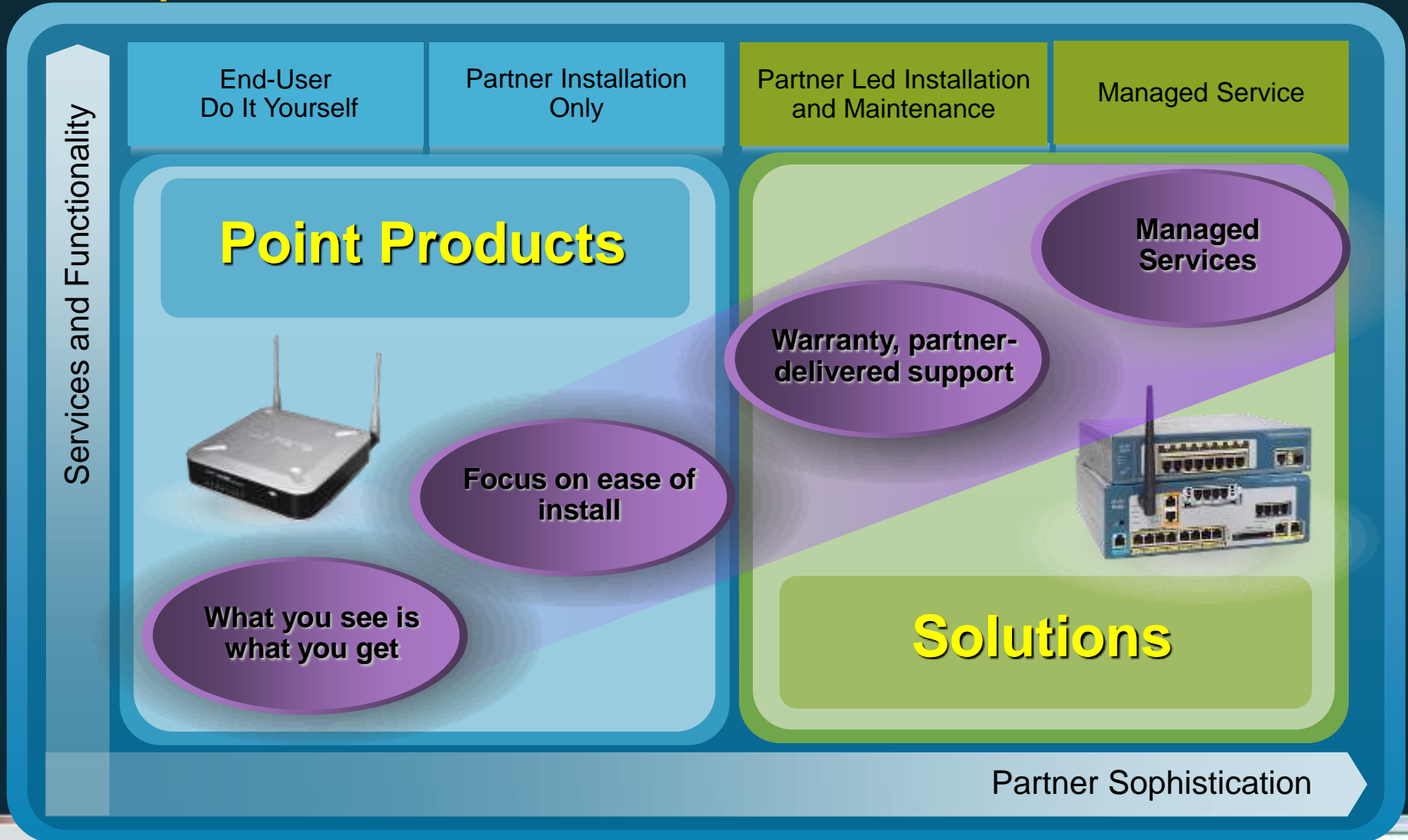
Premiul 2

Wireless-N Vista Media Extender + Internet Home Camera






Cisco Small Business Portfolio




Spectrum of Choices for Diverse Customers



Cisco Small Business VoIP solutions

	Analog Telephone Adapters and Gateways	SPA9000 Voice System <i>(formerly LVS2.0)</i>	SPA IP Phones
Business Size	Up to 8 users	Up to 16 users	1- n (Hosted)
Integrated Services	Voice and Basic call control (end point) <i>VoIP Lines</i>	Voice, Business Call control, Voicemail, AA <i>Basic IP PBX PSTN, ISDN</i>	Voice, Basic and Business Call Control (end point) <i>VoIP Lines IP Centrex endpoint</i>
Call Control	SPA VoIP (SIP)	SPA VoIP (SIP)	SPA VoIP (SIP)
Platform	 <p>SPA ATAs (SPA, PAP, WRP)</p>	 <p>SPA9000 SPA400</p>	 <p>SPA IP Phones (SPA900 Series)</p>

Cisco Unified Communications for Small and Medium Businesses

	Smart Business Communications System	Unified CM Express	Unified CM Business Edition
Business Size	Up to 64 users	30 – 250 users	100+ users
Integrated Services	Voice, messaging, video, data PSTN, FXS Basic VPN, firewall	Voice, messaging, video, data PSTN, FXS VPN, firewall	Voice, messaging, mobility, video Advanced UC applications
Call Control	Unified CM Express	Unified CM Express	Unified CM
Platform	 Unified 500 Series	 Integrated Services Routers	 MCS 7828

SPA9000 Voice System Solution Description



Cisco SPA9000 Voice System

IP Telephony System for Small and Home Office that combines convenience and affordability

- Designed for Small/Home Office Business: 1-to-16 user IP PBX
- Business grade facilities normally present only in medium size systems
- Communicates to the IP, PSTN and ISDN* telephone networks
- Easy Installation and Configuration with the Cisco SPA9000 Configuration Wizard
- Includes Single and Multiple Line IP Phones, and 2 analog ports for fax and analog phones.
- Flexibility for several connectivity options: POE, Wireless-G



Cisco SPA9000 Voice System Components

IP PBX



SPA9000

- 1 to 16 Voice Users
- 2 FXS ports
- SIP Proxy
- SIP App Server
- SIP Media Server

IP Phones



SPA900 SIP IP Phones

- All SPA900 IP SIP Phone Pro Series are supported

PSTN Gateway and Voice Mail Server



SPA400

- 4 FXO port PSTN gateway
- 32 accounts Voice Mail Server for SPA9000

ISDN Gateway



Mediatrix® 4400 Series*

- All Mediatrix® 4400 ISDN BRI Gateways are supported

Connectivity Accessories



PA100, POES5, WBP54G, MB100

- Power Adapter
- POE (802.3af) Splitter
- Wireless Client
- Wall Mount kit for phones



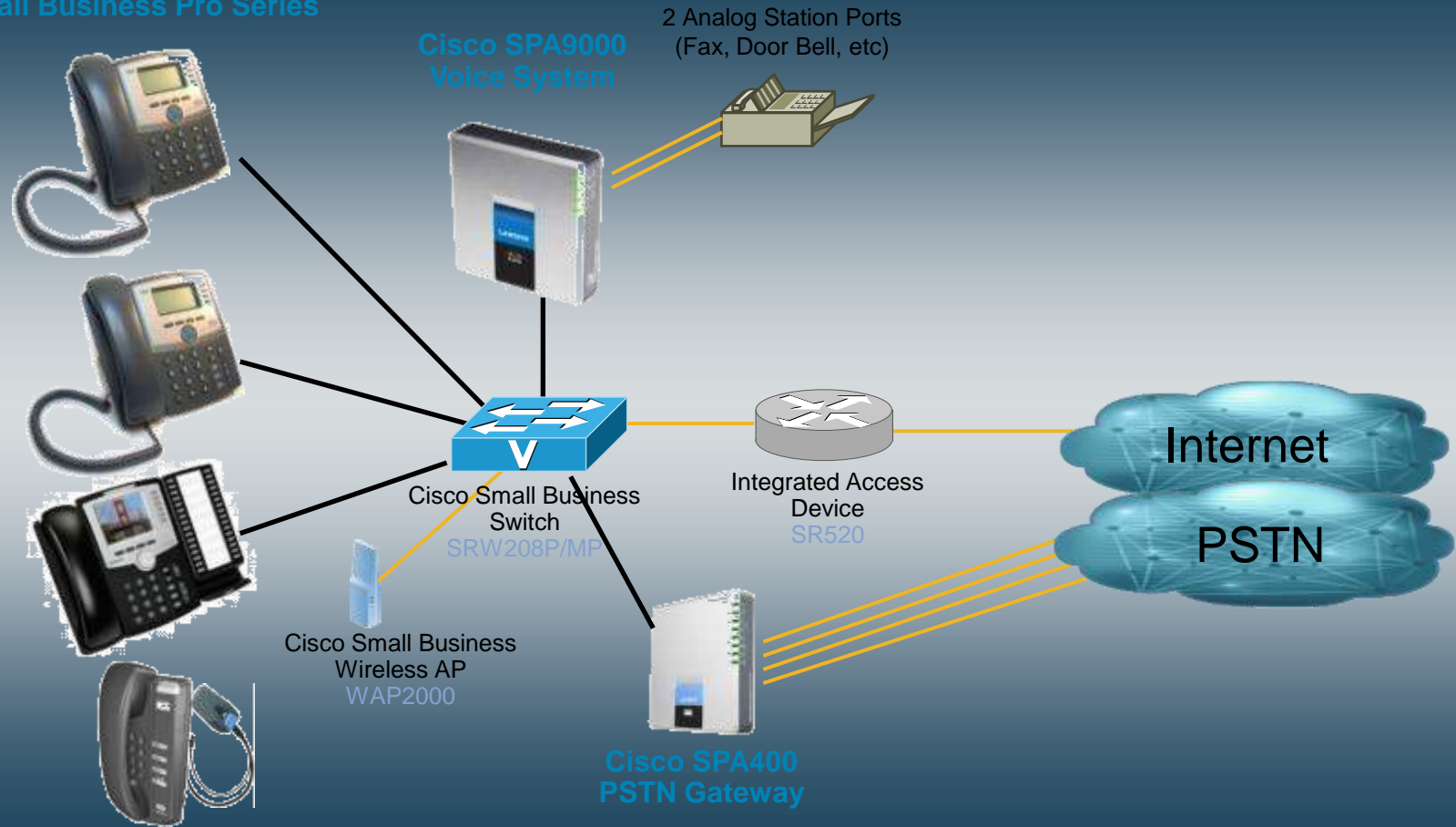
Configuration and Management Applications

Cisco SPA9000 Configuration Wizard
AMDOCS® Jacobs Rimell® QuickStart® SIP UE



Example Small/Home Office with the Cisco SPA9000 Voice System

Cisco SPA900 SIP IP Phone
Small Business Pro Series



Cisco SPA9000 Voice System Product Highlights

Software Functionality

- Configuration Server for SPA900 SIP IP Phones
- SIP Proxy and Registrar
 - Up to 16 Endpoints
- Application Server
 - Call Control Applications
- ATA via RJ11 FXS Ports

Hardware Interfaces

- One Ethernet Switch port (I)
- One Ethernet Admin port (E)
- Two FXS Ports



Cisco SPA9000 Voice System Feature Overview

- 1 to 16 IP Telephones, 2 FXS ports
- 4 SIP trunks with independent routing and dial plans
- Automated Attendant
- Voice Mail – SPA400 or SP Hosted
 - Pre-recorded Customizable VM prompts
- Music on Hold
 - Internal or Network Based
 - Pre-recorded customizable MOH file
- Shared Line Call Appearance
- Call Forwarding
 - All calls, Busy, No Answer
- Call Transfer - Attended and blind
- Call Pickup - Selective and Group
- Intercom and Broadcast paging
- Do Not Disturb
- Three Party Conference Calling
- Call Park and Retrieve
- Extension status monitoring
 - Busy Lamp Function
- Call Hunt Groups
 - Simultaneous, Sequential, Round Robin and Random
- Direct Inward Dialing
 - Automatic DID to ext mapping
- Personal and System Directory
- LDAP Corporate Directory integration
- Remote Provisioning
- T.38 and G.711 PT for Fax support

Cisco SPA900 SIP IP Phones Small Business Pro Series

Basic IP Phones



SPA901

1-line SIP Phone
No Display



SPA921

1-line SIP Phone
B&W HiRes Display



SPA941

4-line SIP Phone
B&W HiRes Display

Business IP Phones



SPA922

1-line SIP Phone
B&W HiRes Display
Backlit support



SPA942

4-line SIP Phone
B&W HiRes Display
Backlit support



SPA962

6-line SIP Phone
HiRes Color Display
Supports SPA932

- 1 Ethernet Port (10 Mbps)
- 4 Softkeys*
- HD Speakerphone*
- 2.5mm Headset connector*
- POE via POES5

* Not available in SPA901

- 2 Ethernet Ports (100 Mbps)
- POE (802.3af)
- 4 Softkeys
- FD Speakerphone with AEC
- 2.5mm Headset connector
- Multiple Languages
- DL Background Picture
- SPA962 – RSS Web
- LDAP Corp Directory
- Enhanced Security

Common Features

- Wireless-G via WBP54G
- MB100 Wall Mount kit
- Cisco SPA Voice
- 1 Personal Directory (100)
- Call Logs (60 each) - Made, answered and missed
- Visual VM Message Waiting indicator
- Secure Remote Provisioning
- Third Party Application Server Support

SPA400 Internet Telephony Gateway with 4 FXO ports and Voicemail

- **PSTN Gateway for Cisco SPA9000**
 - 4 x FXO (Analog) Phone Ports
- **Integrated Voicemail Server**
 - 32 Voicemail Accounts or "In-Boxes"
 - Enables Users to Leave/Playback VM Messages
 - 3.8h of VM Messages Storage
 - USB Memory Stick Included
 - VM Prompts - Multiple languages available for download



Cisco SPA9000 Voice System Local Configuration



Web User Interface
Available in every product



Configuration Wizard
available for Cisco
SPA9000 System for local
Configuration

Cisco SPA9000 Configuration Wizard

Assistant for Cisco SPA9000 Voice System Installation and Configuration

SPA9000 Network Installation

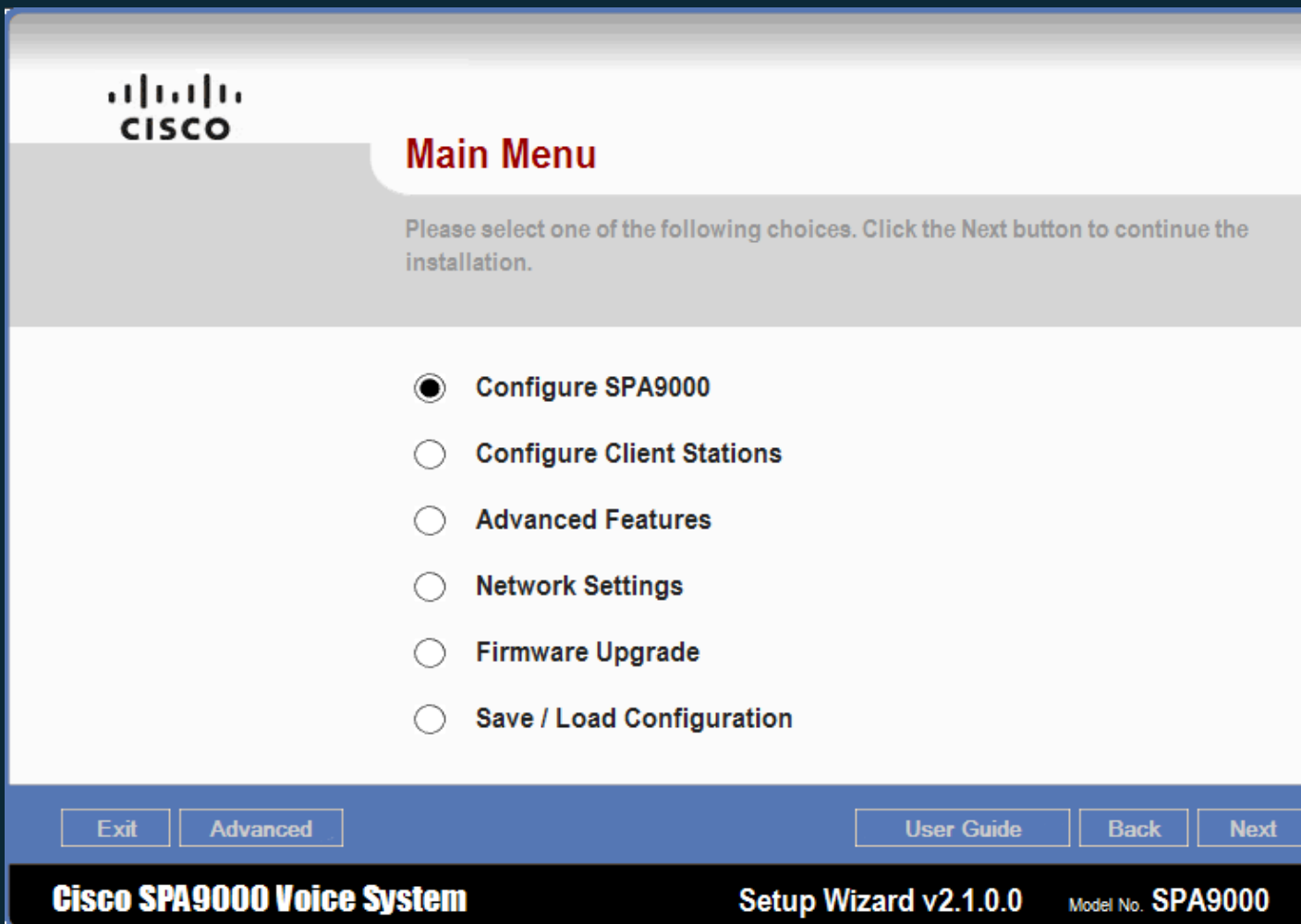
Please connect your Cisco SPA9000 voice system devices to the network according to the following diagram. Please disable Spanning tree in the switch ports connected to the devices, and enable DSCP trust mode as QoS mechanism.

1. Connect a multi-port switch to the router in your network.
2. Connect the INTERNET port on the SPA9000 to the switch.
3. Connect your PC to the switch.
4. All devices should be powered up.
5. Perform a factory reset on the SPA9000 if it has been used before:
 - A. Plug an analog phone into the Phone 1 port of SPA9000.
 - B. Pick up the analog phone, enter **** then 73738#, and then press 1.
 - C. Hang up the phone.


Cisco SPA9000 Voice System Setup Wizard v2.1.0.0 Model No: SPA9000

- Auto discovery and configuration
- Outbound/inbound call routing config
- SPA932 config Support
- Customization and Localization
- Firmware Upgrade
- Load/Restore system configuration
- Quick access to basic and advanced menu options

Cisco SPA9000 Configuration Wizard



The screenshot shows the 'Main Menu' of the Cisco SPA9000 Configuration Wizard. The interface features the Cisco logo in the top left corner. Below the logo, the title 'Main Menu' is displayed in a red font. A grey banner contains the instruction: 'Please select one of the following choices. Click the Next button to continue the installation.' Below this banner, a list of six options is presented, each with a radio button. The first option, 'Configure SPA9000', is selected. At the bottom of the screen, there is a blue bar with several buttons: 'Exit', 'Advanced', 'User Guide', 'Back', and 'Next'. A black footer bar at the very bottom contains the text 'Cisco SPA9000 Voice System', 'Setup Wizard v2.1.0.0', and 'Model No. SPA9000'.

 **CISCO**

Main Menu

Please select one of the following choices. Click the Next button to continue the installation.

- Configure SPA9000**
- Configure Client Stations**
- Advanced Features**
- Network Settings**
- Firmware Upgrade**
- Save / Load Configuration**

[Exit](#) [Advanced](#) [User Guide](#) [Back](#) [Next](#)

Cisco SPA9000 Voice System Setup Wizard v2.1.0.0 Model No. SPA9000

Cisco SPA9000 Configuration Wizard

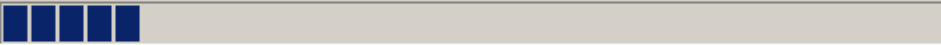


Main Menu

Please select one of the following choices. Click the Next button to continue the installation.

SetupWizard Progress [X]

Discovering SPA9000 in the network. Please wait...



- Firmware Upgrade
- Save / Load Configuration

Exit Advanced User Guide Back Next


Cisco SPA9000 Voice System

Setup Wizard v2.1.0.0

Model No. SPA9000

Cisco SPA9000 Configuration Wizard

The screenshot shows the 'Advanced Feature Menu' in the Cisco SPA9000 Configuration Wizard. At the top left is the Cisco logo. The title 'Advanced Feature Menu' is in red. Below it, a grey bar contains the instruction: 'Select the feature to configure, then click on the Next button below to continue.' The main area lists seven features with radio buttons: NAT Settings (selected), Client Extensions, Hunt Group, Auto Attendant, Localization, Password Setup, and SPA932 Attendant Console. At the bottom, there are navigation buttons: Exit, Main, User Guide, Back, and Next. A footer bar contains 'Cisco SPA9000 Voice System', 'Setup Wizard v2.1.0.0', and 'Model No. SPA9000'.

 **CISCO**

Advanced Feature Menu

Select the feature to configure, then click on the Next button below to continue.

- NAT Settings
- Client Extensions
- Hunt Group
- Auto Attendant
- Localization
- Password Setup
- SPA932 Attendant Console

[Exit](#) [Main](#) [User Guide](#) [Back](#) [Next](#)

Cisco SPA9000 Voice System Setup Wizard v2.1.0.0 Model No. SPA9000

Cisco Smart Business Communications System

Release 1.3 Solution Update

Smart Business Communication Systems 1.3

Simple, Complete, Secure Communications for Small Businesses

Unified Communications

IP Phones

Switching

Wireless

WAN Security / Teleworker



Unified 500 Series

7900 & 500 Series

CE520 Series

AP500
WLC 500

Cisco SR520

- 8 to 64 Voice Users
- Desktop & Rackmount Models
- Optional Integrated WLAN AP on desktop models

- All Cisco Unified IP Phones are supported including new Cisco 500 Series
- Companion Switch for UC500
- All Cisco Unified IP Phones are supported including new Cisco 500 Series phones now with optional switch port on phone

- 8 port desktop and 24 port rack mount models

- Autonomous APs or Unified Wireless Solution with Mobility Express

- VPN, Wired and Wireless Access, Remote IP Phone extension

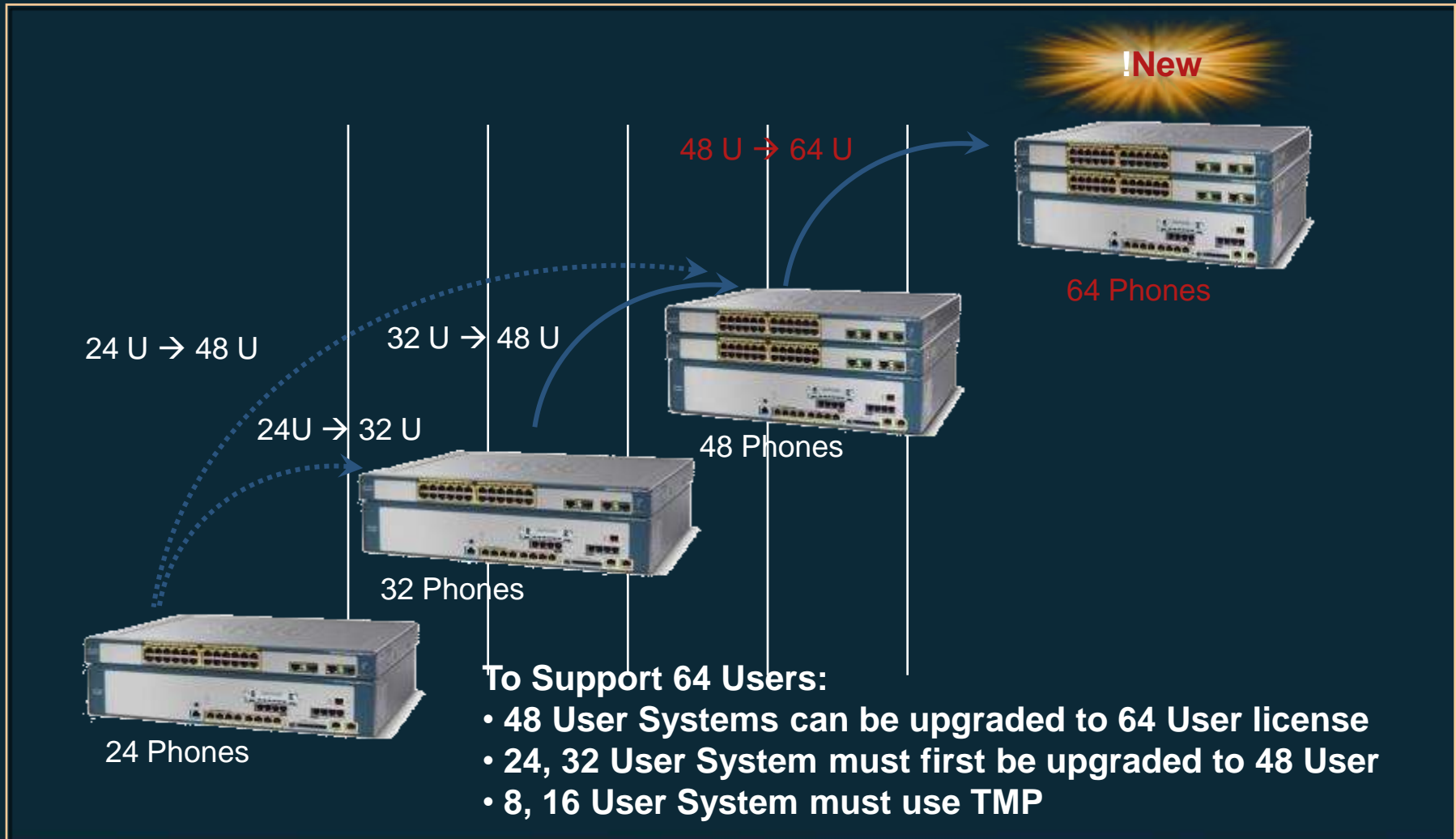


Business & Productivity Applications

Cisco Smart Assist Features
Cisco Configuration Assistant
Cisco Monitor Director



Cisco UC500 64 User License Upgrade



Cisco Unified Communications 500 Series Updates



New 64 user software upgrade available in September 2008

- License-based upgrades make growth easy
- Scales up from 48U solution using an additional Catalyst Express 520 Series 24-port switch
- 64U upgrade only works with 48U UC500 models
- No direct upgrade path for 24U => 64U or 32U => 64U
- Installed on UC500 48U box via CCA 1.8 and above



SW licensing upgrades for 64 users

Available Today:

- SL-UC520-16UPG= (from 8-16 users)
- SL-UC520-32UPG= (from 24-32 users)
- SL-UC520-48UPG= (from 32-48 users)
- SL-UC520-24-48UPG= (from 24-48 users)

Available in September 2008:

- SL-UC520-64UPG= (from 48-64 users)

-All software upgrades will be supported with IOS XW9 release in Sept. 2008

Cisco Unified IP Phone 500 Series

Now with 10/100 ports for PCs



**Target Markets: SP Managed Services
Commercial, Enterprise**



New affordable, entry-level Cisco IP Phones for SBCS

Deployments that only need KTS and low-end PBX features (such as shared line, intercom, speakerphone, paging, park)

Purpose-built for use with Cisco's UC500 Series

Four models

CP-521G= (1-line): \$149 (NTE) US List

CP-524G= (4-line): \$189 (NTE) US List

***CP-521SG**= (1-line with PC switch port): \$159 (NTE) US List

***CP-524SG**= (4-line with PC switch port): \$199 (NTE) US List

G.711/G.729 only

LCD Display

Single 10/100 PoE port (802.3af)

Optional power supplies and wallmount kit

Supported only on SBCS/UC500 (via unique SPCP protocol)

*Requires CCA 1.8 and above (available in Sept. 08)

Cisco Configuration Assistant 1.8

Available
Sept.

System Level Feature Enhancements

- Support for SR520 secure router
- 64 user license upgrade for UC 500 48U platform

Security (with SR520 only)

- Advanced (Zone-based) firewall
- SSL VPN
- Non split-tunnel and split tunnel VPN modes

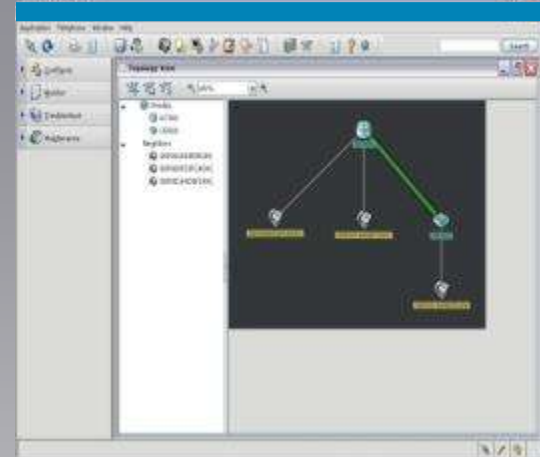
Voice Feature Enhancements

- Support for 7937, 7915, 7916 (Early Adopter)
- Support for 521SG, 524SG phones
- Button labels

Wireless Feature Enhancements

- Support for 10 autonomous Access Points

**Simplifies the Task of Configuring, Deploying,
and Administering SBCS Solutions**



**For compatible Software &
Releases for SBCS platforms
please see below:
supportwiki.cisco.com/sbcs**

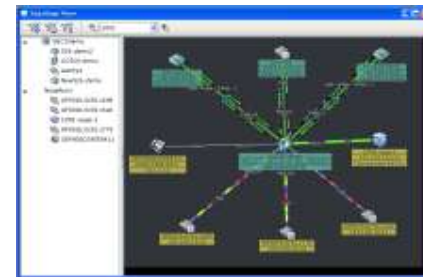
www.cisco.com/go/configassist

Cisco Wireless Mobility Express Updates

- Increases AP 521 Scalability
- Up to 10 Autonomous APs (up from three)*
- DHCP proxy support**
- Guest VLAN security**
- Up to 12 APs per WLAN Controller (WLC526)**

*Enhancements enabled by CCA 1.8

**Enhancements coming in upcoming WLC SW Update targeted for Oct 08



More Information

Cisco.com:

<http://www.cisco.com/go/sbcs>

<http://www.linksys.com/lvs>

Partner Central:

<http://www.cisco.com/web/partners/sell/smb/products/sbcs.html>

Cisco SBCS Support:

<http://supportwiki.cisco.com/sbcs>

<http://www.linksys.com/support>



SBCS Supportwiki:
supportwiki.cisco.com/sbcs

Q & A





CISCO

